

Class - 3rd Sem
Paper - CC7

Date - 01/10/2020
Unit - I-1 partial

Indian Geo- 4

By: Sandip Tripathy, Dept. of Geography, Kharagpur College

Topic Covered - Central Highland of India

Central Highland: Plateaus and Ranges

- Central Highland Consists of
 - Central Highland Plateaus
 - Deccan Plateaus
 - North-Eastern Plateaus
- Ranges in Central Highland
 - Aravalli Range
 - Satpura Range
 - Vindhya Range
 - Eastern Ghats
 - Western Ghats

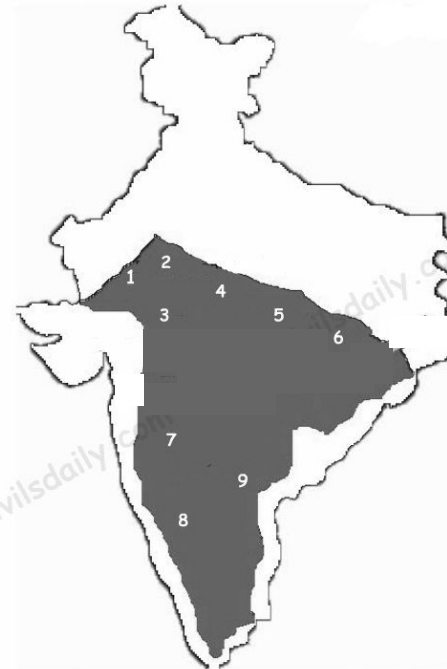


Plateaus:

- Central Highland Plateaus
 - Marwar Plateau (Undulated land dissected by Banas River, Height- 200-500 m)
 - Madhya Bharat Pathar (Upland closely associated to Marwar)
 - Malwa Plateau (Between Aravallis and Vindhyas ; Igneous rock formation and black soil)
 - Bundelkhand Plateau (Undulated land with high rate of erosion)
 - Baghelkhand Plateau (Undulated closely associated to Maikal range)
 - Chotanagpur Plateau (mineral rich step-added patland having form)

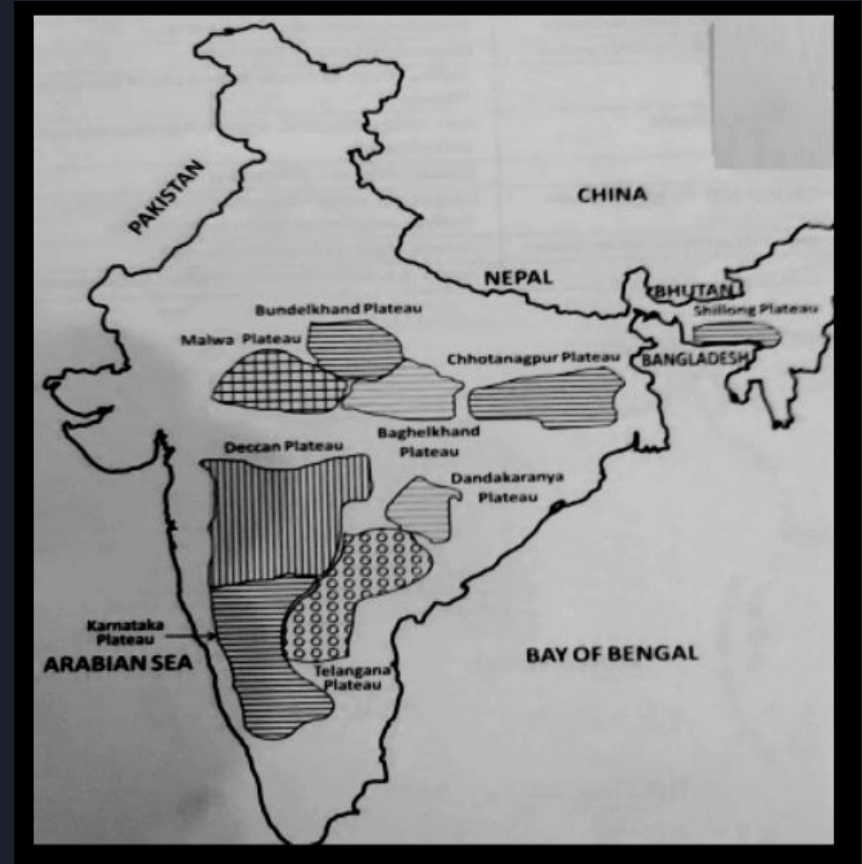
Central Highlands:

1. Marwar Upland
2. Madhya Bharat Pathar
3. Malwa Plateau
4. Bundelkhand Plateau
5. Baghelkhand Plateau
6. Chotanagpur Plateau



Plateaus:

- Deccan Plateaus
 - Maharashtra Plateau (authentic deccan trap topography)
 - Karnataka Plateau (known as Mysore plateau, dissected Malnad and Maidan)
 - Telangana Plateau (part of deccan plateau)
 - Dandakaranya Plateau (contains igneous and metamorphic rock of archean period)



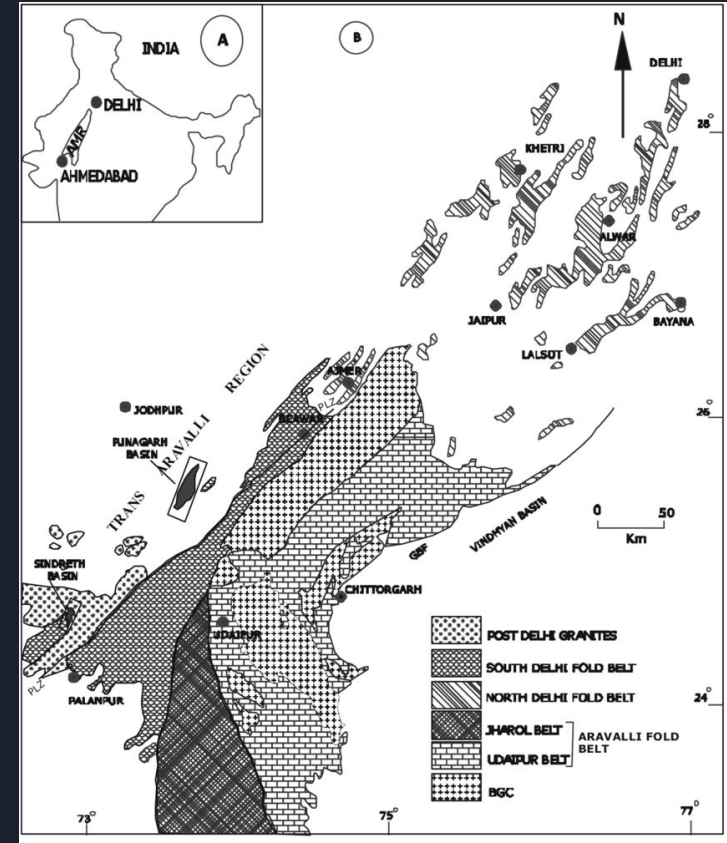
Plateaus:

- North Eastern Plateau
 - Meghalaya/Shillong Plateau(dissected due to erosion, closely associated with Garo, Khasi, Gayantia, Mikir Hills)
 - Karbi-Anglong Plateau(Part of Meghalaya Plateau)



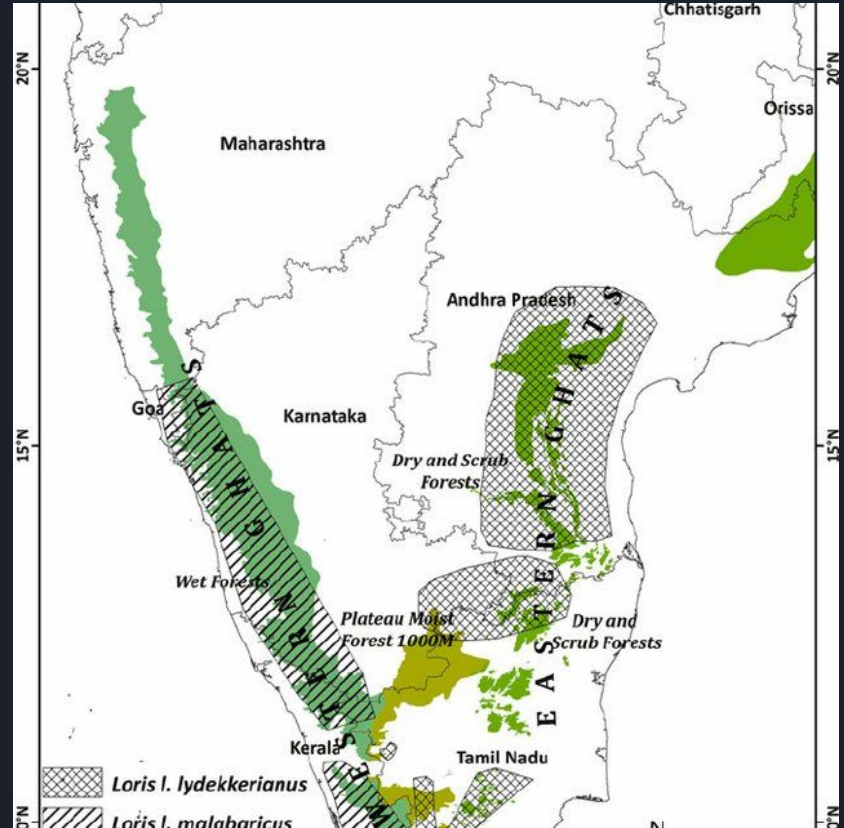
Hills/Ranges in Central Highland

- Aravalli Range
 - Part of Aravalli - Delhi Orogeny
 - Marwar and Bundelkhand Segment
 - Cratons meet here
 - Mineral Rich Area
 - Eroded Folded Mountain

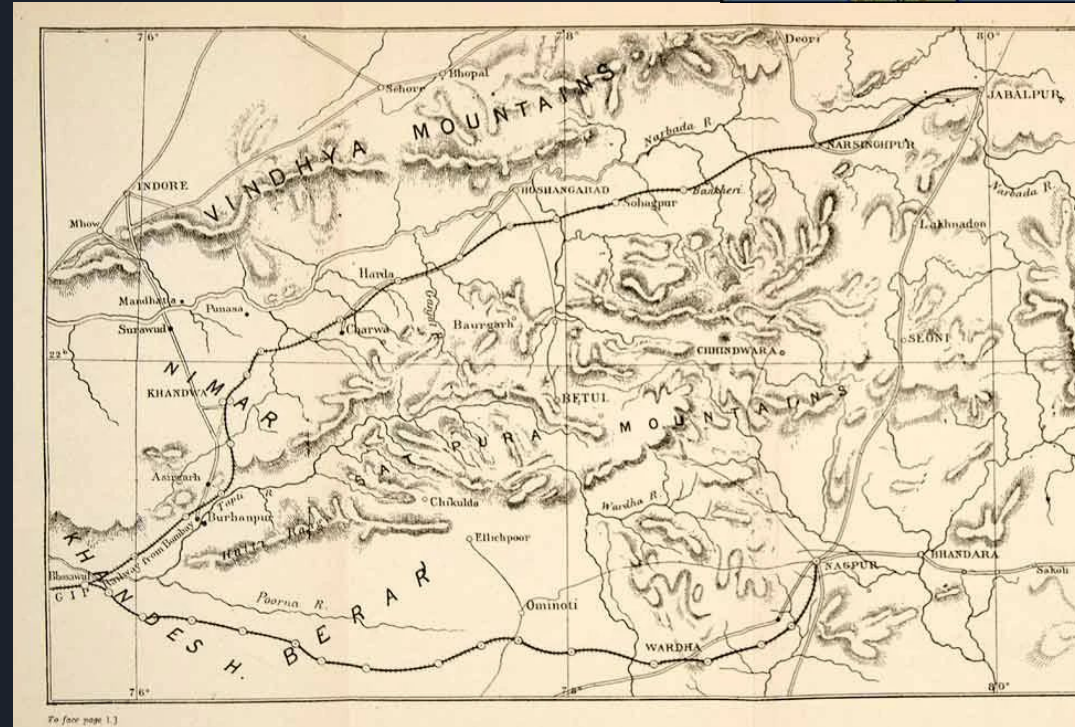


Hills/Ranges in Central Highland

- Western Ghat
 - Folded Part of Deccan Plateau
 - Continuous and lesser slope than Eastern Ghat
 - Also name as Sahyadri
 - Dissected water dipped Coast
- Eastern Ghat
 - Extends Orissa to Nilgiri
 - It meets with Western Ghat in Nilgiri Hill
 - Cardamom Hill
 - Dissected not continuous
 - More older than western



Hills/Ranges in Central Highland



- Vindhya
 - Emerged as escarpment across Narmada-Son Valley
 - Sedimentary rock formed range
 - Height is 350-600 metre
- Satpura
 - Series of seven Hills Maikal, Mahadeo, Kalibhit, Asirgarh, Bijargarh, Barwani and Arwani
 - Parallel to the Narmada and Tapi
 - Pachmarhi and Amarkantak height peaks



Thank you,
Have Questions? Ask here

Graphical and Textual Reference:

- <https://www.gktoday.in/gk/central-highlands-of-peninsular-india/>
- <https://iasmania.com/india-physiography-the-indian-plateau/>
- <https://www.civildaily.com/the-peninsular-plateau-part-2/>