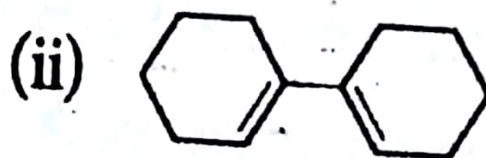
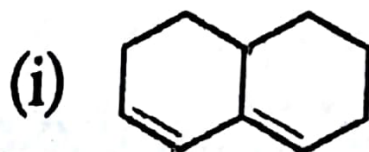
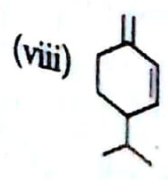
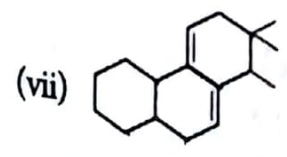
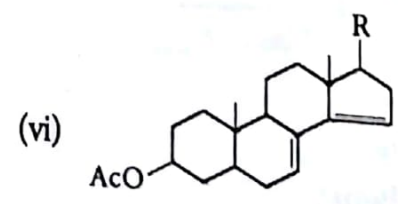
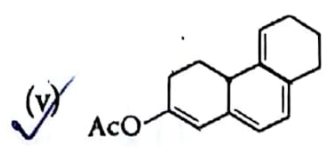
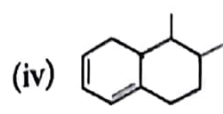
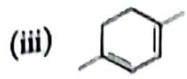
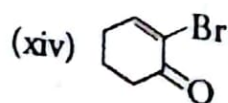
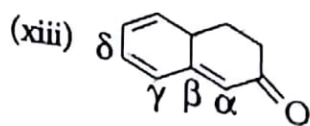
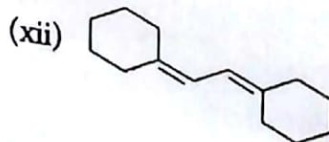
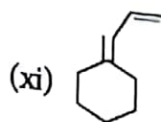
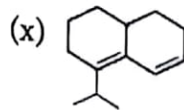
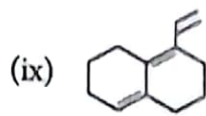


Compound

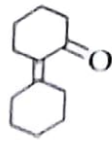




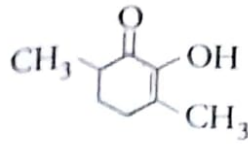


Ch 3

(xv)



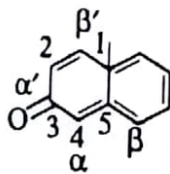
(xvi)



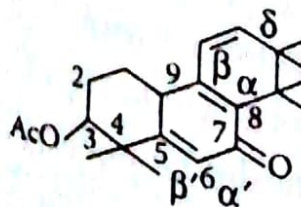
(xvii)

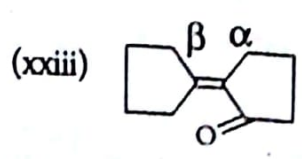
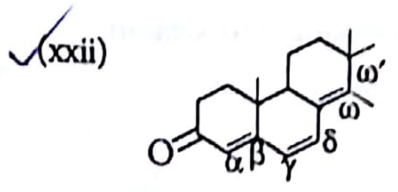
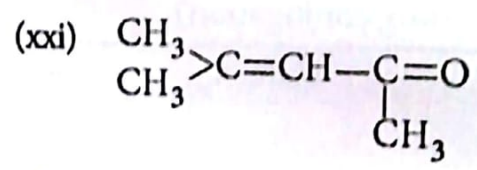
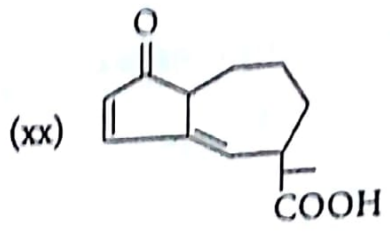


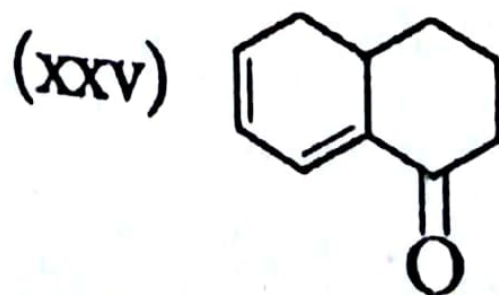
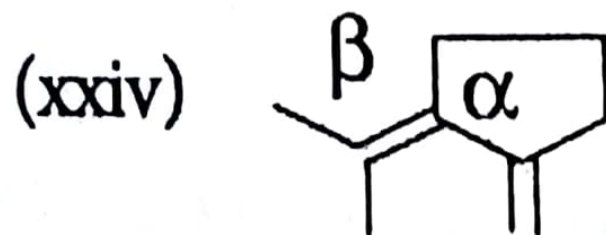
(xviii)



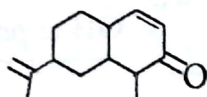
(xix)







55. A neutral compound showed λ_{max} at 251 nm. Predict whether the compound has the following structure. If not, propose an alternative one with similar basic skeleton.



THIS VALUE IS WITHIN 5 UNIT OF THE OBSERVED VALUE

56. An unknown compound is believed to have either structure A or B. Its UV-spectrum shows λ_{max} at 320 nm (Ethanol). What could be its likely structure?

